

Bladder Tank



Product Summary

Magnum Bladder Tanks are the main component in a balanced pressure proportioning system. The Magnum Bladder Tank is an ASME coded pressure vessel. The tanks are constructed of SA 516 GR.70 carbon steel and include a neoprene rubber bladder with nylon reinforcements and a perforated pvc center tube. Magnum Bladder Tanks are available in both vertical and horizontal configurations and are an option in many high risk areas. The uncomplicated design avoids the risk of a system failure and the ease of operation requires no outside source. The Magnum Bladder Tanks are also offered with pre-piped ratio controllers, UL listed with sizes 3", 4", 6" and 8".

Standard Features

- Design Working Pressure of 175 PSIG
- Hydro Tested at 263 PSIG
- Constructed of Carbon Steel
- Includes a Neoprene Rubber Bladder with Nylon Reinforcements
- Lifting Lugs
- Vertical Tanks are mounted on a skirt with holes drilled for anchoring.
- Horizontal Tanks are mounted on welded saddles with holes drilled for anchoring.
- Stainless Steel ASME Nameplate
- ASME Code Section VIII, Division 1 U-Stamped
- National Board Registration
- The exterior of all bladder tanks will be prepared and finished with a high gloss urethane.



MAGNUM
FIRE AND SAFETY SYSTEMS

(409)-963-0161
sales@magnumfire.com
www.MagnumFire.com

Bladder Tank

Options

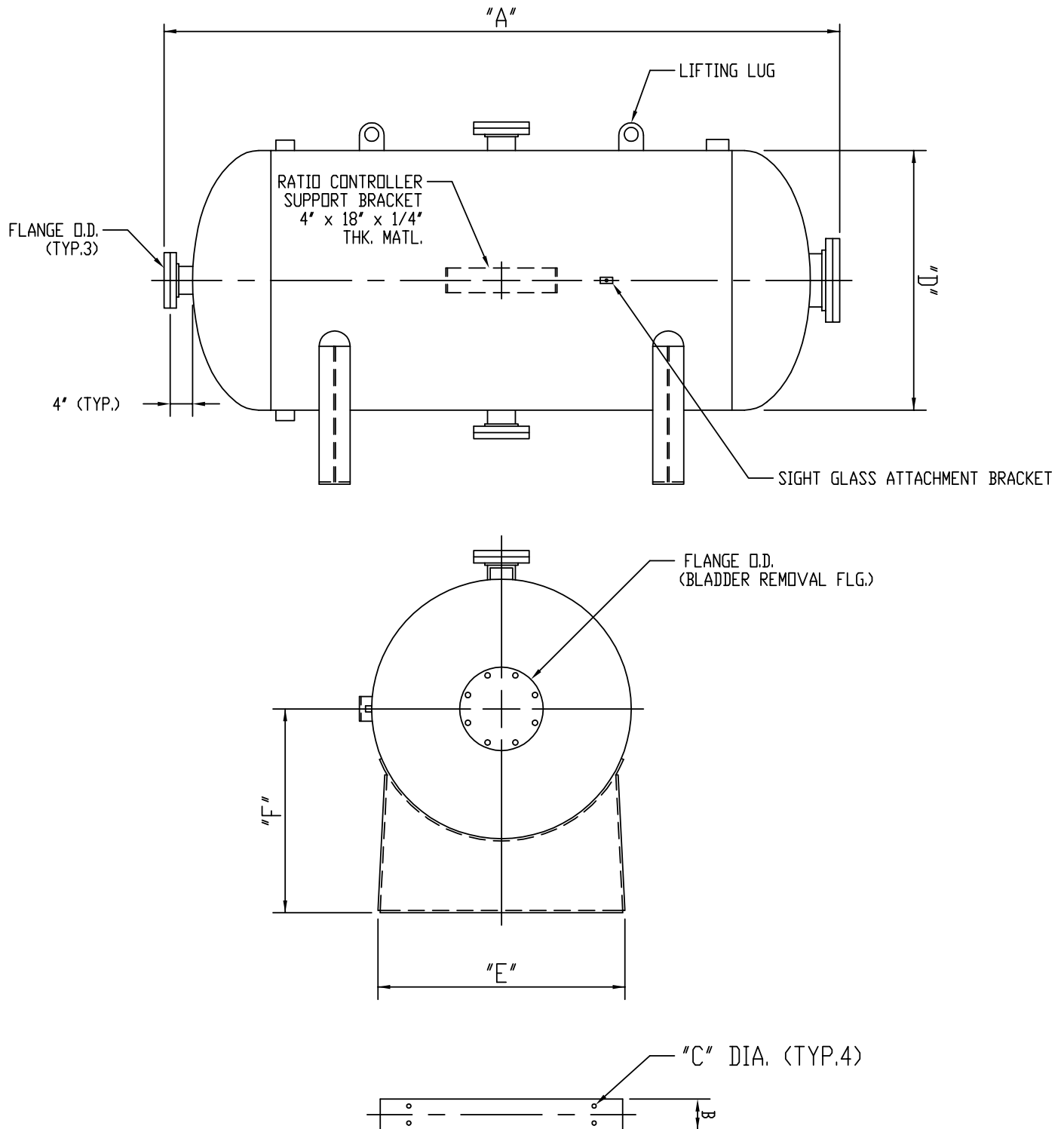
- Pre-Piped Ratio Controller
- Stainless Steel Construction
- Internal Coal Tar Epoxy
- ABS Certification
- Pressure Relief Valve
- Sight Glass Level Gauge Assembly
- Ladders and Platforms
- Skid Mounted
- Water Powered Ball Valves
- Pressure Gauges
- 100% X-Ray
- Seismic Calculations

Custom sizes and dimensions are available.
Please contact our sales department for more

Certifications

- American Society of Mechanical Engineers (ASME),
- Underwriters Laboratories, Inc. (UL)
- National Board of Boiler and Pressure Vessel Inspection (NB)

Horizontal Tank Drawing



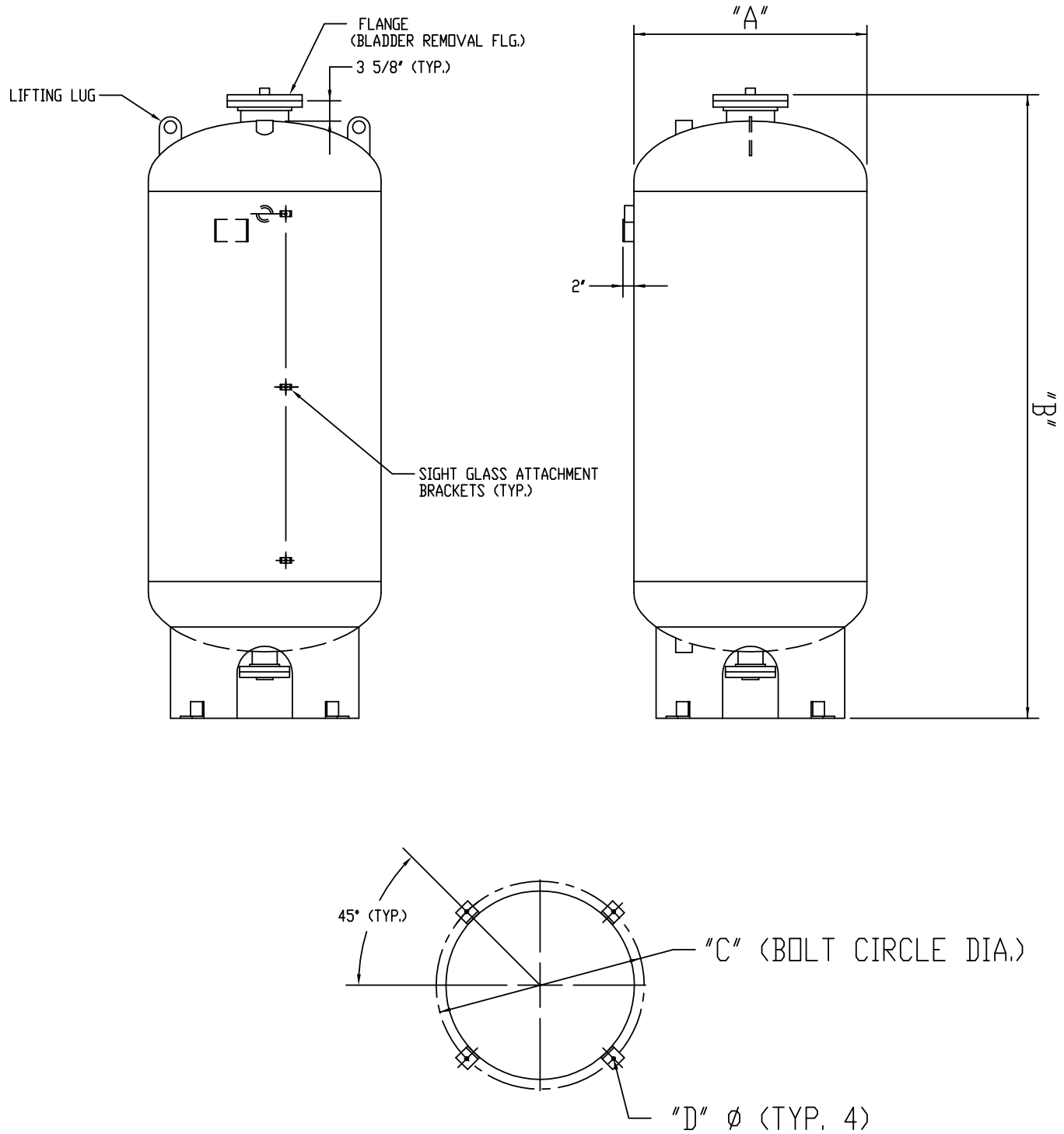


(409)-963-0161
 sales@magnumfire.com
 www.MagnumFire.com

Horizontal Tank Dimensions

CAPACITY GAL. (LIT.)	"A"	"B"	"C"	"D"	"E"	"F"	WEIGHT LBS. (KGS)
50 (189)	55-1/2"	3"	9/16"	20 (508)	20"	22"	246 (112)
100 (379)	72"	3"	9/16"	24 (610)	24"	24"	544 (247)
150 (568)	71"	4"	9/16"	30 (762)	30"	27"	802 (364)
200 (757)	89"	4"	9/16"	30 (762)	30"	27"	1007 (457)
300 (1136)	93"	4"	9/16"	36 (914)	34"	30"	1414 (641)
400 (1514)	93"	5"	11/16"	42 (1067)	40"	33"	1716 (778)
500 (1893)	112"	5"	11/16"	42 (1067)	40"	33"	1896 (860)
600 (2271)	131"	5"	11/16"	42 (1067)	40"	33"	2075 (941)
700 (2650)	119"	5"	11/16"	48 (1219)	44"	40"	2480 (1125)
800 (3028)	134"	5"	11/16"	48 (1219)	44"	40"	3117 (1414)
900 (3407)	148"	5"	11/16"	48 (1219)	44"	40"	3484 (1580)
1000 (3785)	163"	5"	11/16"	48 (1219)	44"	40"	3852 (1747)
1100 (4164)	177"	5"	11/16"	48 (1219)	44"	40"	4110 (1864)
1200 (4542)	131"	6"	11/16"	60 (1524)	54"	46"	4130 (1873)
1300 (4921)	141"	6"	11/16"	60 (1524)	54"	46"	4437 (2013)
1400 (5299)	151"	6"	11/16"	60 (1524)	54"	46"	4745 (2152)
1500 (5678)	159"	6"	11/16"	60 (1524)	54"	46"	5070 (2300)
1600 (6056)	125"	8"	1-1/16"	72 (1829)	64"	50"	4465 (2026)
1700 (6435)	131"	8"	1-1/16"	72 (1829)	64"	50"	5032 (2283)
1800 (6813)	138"	8"	1-1/16"	72 (1829)	64"	50"	5032 (2283)
1900 (7192)	144"	8"	1-1/16"	72 (1829)	64"	50"	4885 (2216)
2000 (7570)	151"	8"	1-1/16"	72 (1829)	64"	50"	5305 (2406)
2100 (7949)	157"	8"	1-1/16"	72 (1829)	64"	50"	6080 (2758)
2200 (8327)	164"	8"	1-1/16"	72 (1829)	64"	50"	5695 (2583)
2300 (8706)	170"	8"	1-1/16"	72 (1829)	64"	50"	6080 (2758)
2400 (9084)	177"	8"	1-1/16"	72 (1829)	64"	50"	6080 (2758)
2500 (9464)	183"	8"	1-1/16"	72 (1829)	64"	50"	6475 (2937)
2600 (9841)	189"	8"	1-1/16"	72 (1829)	64"	50"	6475 (2937)
2700 (10221)	196"	8"	1-1/16"	72 (1829)	64"	50"	6869 (3116)
2800 (10598)	202"	8"	1-1/16"	72 (1829)	64"	50"	6869 (3116)
2900 (10978)	209"	8"	1-1/16"	72 (1829)	64"	50"	7258 (3292)
3000 (11355)	215"	8"	1-1/16"	72 (1829)	64"	50"	7258 (3292)
3100 (11735)	222"	8"	1-1/16"	72 (1829)	64"	50"	7647 (3469)
3200 (12112)	228"	8"	1-1/16"	72 (1829)	64"	50"	7647 (3469)
3300 (12491)	234"	8"	1-1/16"	72 (1829)	64"	50"	7899 (3583)
3400 (12870)	241"	8"	1-1/16"	72 (1829)	64"	50"	6869 (3116)
3500 (13249)	247"	8"	1-1/16"	72 (1829)	64"	50"	6869 (3116)
3600 (13627)	254"	8"	1-1/16"	72 (1829)	64"	50"	7258 (3292)
3700 (14006)	260"	8"	1-1/16"	72 (1829)	64"	50"	7258 (3292)
3800 (14385)	267"	8"	1-1/16"	72 (1829)	64"	50"	7647 (3469)
3900 (14763)	273"	8"	1-1/16"	72 (1829)	64"	50"	7647 (3469)
4000 (15142)	280"	8"	1-1/16"	72 (1829)	64"	50"	7899 (3583)

Vertical Tank Drawing



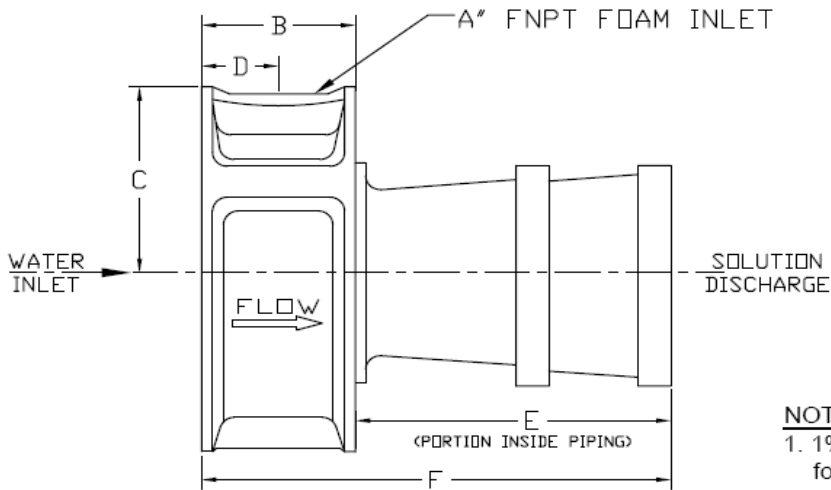


(409)-963-0161
 sales@magnumfire.com
 www.MagnumFire.com

Vertical Tank Dimensions

CAPACITY GAL. (LIT.)	"A"	"B"	"C"	"D"	WEIGHT LBS. (KGS)
25 (95)	20"	40"	22-3/4"	9/16"	226 (102)
36 (136)	24"	41"	26-3/4"	9/16"	230 (104)
50 (189)	24"	49"	26-3/4"	9/16"	235 (107)
100 (379)	24"	78"	26-3/4"	9/16"	385 (175)
150 (568)	30"	77"	27-3/4"	9/16"	540 (245)
200 (757)	30"	95"	27-3/4"	9/16"	665 (302)
300 (1136)	36"	99"	32-3/4"	9/16"	1005 (456)
400 (1514)	42"	103"	36-3/4"	11/16"	1405 (637)
500 (1893)	42"	118"	36-3/4"	11/16"	1455 (660)
600 (2271)	48"	111"	41-1/2"	11/16"	1550 (703)
700 (2650)	48"	125"	41-1/2"	11/16"	1680 (762)
750 (2839)	48"	133"	41-1/2"	11/16"	1780 (807)
800 (3028)	48"	143"	41-1/2"	11/16"	1880 (853)
900 (3407)	60"	113"	51-1/2"	11/16"	2200 (998)
1000 (3785)	60"	123"	51-1/2"	13/16"	2600 (1179)
1100 (4164)	60"	132"	51-1/2"	13/16"	2960 (1674)
1200 (4542)	60"	141"	51-1/2"	13/16"	3075 (1395)
1300 (4921)	60"	151"	51-1/2"	13/16"	3175 (1440)
1400 (5300)	60"	160"	51-1/2"	13/16"	3310 (1501)
1500 (5678)	60"	169"	51-1/2"	13/16"	3350 (1520)
1600 (6057)	72"	135"	57-1/2"	13/16"	3500 (1588)
1700 (6435)	72"	141"	57-1/2"	13/16"	3625 (1644)
1800 (6814)	72"	148"	57-1/2"	13/16"	3750 (1701)
1900 (7192)	72"	154"	57-1/2"	13/16"	3875 (1758)
2000 (7571)	72"	161"	57-1/2"	13/16"	4000 (1814)
2100 (7950)	72"	167"	57-1/2"	13/16"	4125 (1871)
2200 (8328)	72"	174"	57-1/2"	13/16"	4250 (1928)
2300 (8706)	72"	180"	57-1/2"	13/16"	4375 (1984)
2400 (9085)	72"	187"	57-1/2"	13/16"	4500 (2041)

Foam Proportioning Systems



NOTE:

1. 1%, 3%, or 6% proportioning and type foam concentrate to be specified by customer.

Ratio Controller Dimension Chart

MODEL	APPROXIMATE DIMENSIONS- IN (MM)						WEIGHT		STANDARD CONCENTRATE LINE SIZES
	A	B	C	D	E	F	LBS	KGS.	
3" RCW	1-1/4"	2-3/8" (60)	2-5/8" (67)	1-1/4" (32)	3-3/4" (95)	6-1/8" (156)	10	4.5	1-1/4"
4" RCW	1-1/2"	2-5/8" (67)	3-3/8" (86)	1-5/16" (33)	5-3/8" (137)	8" (203)	16	7.3	1-1/2"
6" RCW	2"	3-1/4" (83)	4-1/4" (108)	1-5/8" (41)	8-3/4" (222)	12" (305)	32	14.5	2"
8" RCW	2-1/2"	3-1/2" (89)	5-1/4" (133)	1-3/4" (44)	8-1/2" (216)	12" (305)	53	24	2-1/2"

Ratio Controller Flow Range Chart in GPM (LPM)

RATIO CONTROLLER SIZE	CONFIGURATION	NOMINAL ALCOHOL FLOW	NOMINAL AFFF FLOW	PROPORTIONING (FIXED)
3"	WAFER, BETWEEN FLANGES	200-700 (757-2650)	100-700 (379-2650)	1%/3%/6%
4"	WAFER, BETWEEN FLANGES	300-1250 (1136-4732)	175-1250 (662-4732)	1%/3%/6%
6"	WAFER, BETWEEN FLANGES	500-2500 (1893-9464)	350-2500 (1325-9464)	1%/3%/6%
8"	WAFER, BETWEEN FLANGES	950-4500 (3596-17034)	700-4500 (2650-17034)	1%/3%/6%