

# FIRE HOSE REEL



SRI fire hose reels are tested and approved to European Standard EN671 by British Standards Institution and to Australian Standards AS1221 by QAS Australia. These approvals require the certification authority to carry out regular inspection of our hose reels manufacturing facility, testing of hose reels and auditing of quality system. With rigorous inspection and testing of our fire hose reels during production the

performance and reliability is at the highest standard. SRI manufactures a wide selection of fire hose reel, 3/4" and 1", swing and fixed type, manual and automatic. Swing type hose reel has double 180° rotating hinge, which allows hose reel to be mounted in a recessed wall and fixed type hose reel is complete with hose guide which allows the hose withdrawal in all directions.

## Features

- Side Plate powder painted finish red
- Automatic hose reel has integrated automatic stop valve which will open after 2 revolution of the reel
- Threaded Inlet connection
- Outlet connection for hose can be rotated for left and right direction
- Waterways made from non ferrous metals which ensure corrosion free\*
- Maximum working pressure 15Bar, test pressure 20bar
- Side plate available in stainless steel

\*(EN671 Approved models)

Code No.	A	Hose Diameter x Length	B	Type
HRS038-MS-022-RD	22"(559mm)	25mm x 30m	350mm	Swing Manual
HRS038-MS-722-RD	22"(559mm)	25mm x 30m	290mm	Swing Manual
HRS038-MS-019-RD	19"(483mm)	25mm x 30m	350mm	Swing Manual
HRS037-MS-019-RD	19"(483mm)	19mm x 30m	350mm	Swing Manual
HRS037-MS-022-RD	22"(559mm)	19mm x 30m	350mm	Swing Manual
HRS036-MS-022-RD	22"(559mm)	25mm x 30m	310mm	Fixed Manual
HRS036-MS-722-RD	22"(559mm)	25mm x 30m	240mm	Fixed Manual
HRS036-MS-019-RD	19"(483mm)	25mm x 30m	310mm	Fixed Manual
HRS035-MS-019-RD	19"(483mm)	19mm x 30m	310mm	Fixed Manual
HRS035-MS-022-RD	22"(559mm)	19mm x 30m	310mm	Fixed Manual
HRS061-MS-722-RD	22"(559mm)	25mm x 30m	290mm	Swing Automatic
HRS060-MS-719-RD	19"(483mm)	19mm x 30m	290mm	Swing Automatic
HRS056-MS-722-RD	22"(559mm)	25mm x 30m	240mm	Fixed Automatic
HRS055-MS-719-RD	19"(483mm)	19mm x 30m	240mm	Fixed Automatic

### SIRIM, PSB APPROVED BS EN671-1

HRS038-SS-022-RD	22"(559mm)	25mm x 30m	350mm	Swing Manual
------------------	------------	------------	-------	--------------

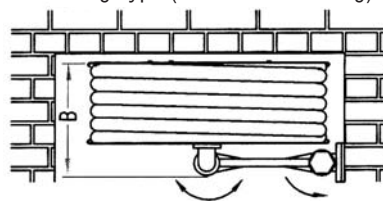
### BSI APPROVED BS EN671-1

HRS033-SS-022-RD	22"(559mm)	25mm x 30m	290mm	Swing Manual
HRS034-SS-022-RD	22"(559mm)	19mm x 30m	290mm	Swing Manual
HRS031-SS-022-RD	22"(559mm)	25mm x 30m	240mm	Fixed Manual
HRS032-SS-022-RD	22"(559mm)	19mm x 30m	240mm	Fixed Manual
HRS029-SS-022-RD	22"(559mm)	25mm x 30m	290mm	Swing Automatic
HRS030-SS-022-RD	22"(559mm)	19mm x 30m	290mm	Swing Automatic
HRS027-SS-022-RD	22"(559mm)	25mm x 30m	240mm	Fixed Automatic
HRS028-SS-022-RD	22"(559mm)	19mm x 30m	240mm	Fixed Automatic

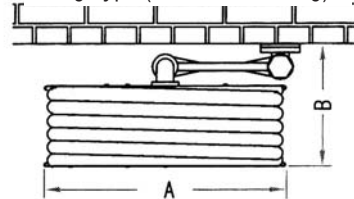
### AS APPROVED TO AS1221

HRS035-GI-019-RD	19"(483mm)	19mm x 36m	310mm	Fixed Manual
HRS037-GI-019-RD	19"(483mm)	19mm x 36m	350mm	Swing Manual
HRS154-MS-600-RD	600mm	19mm x 36m	210mm	Fixed Manual

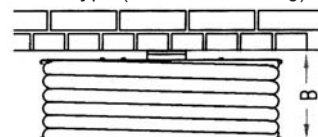
Swing Type (Recessed Mounting)



Swing Type (Surface Mounting)



Fixed Type (Surface Mounting)





# FIRE REEL HOSE



**SRI** manufactures fire reel hose which has been tested by European, Australian and Malaysian laboratories to European Standard EN 694 and Australian Standard AS 1221. Available in 3/4" and 1". Standard coil length 30m, 36m or 100m.

## Specification:

Working Pressure: 220Psi (15 Bar)  
Minimum Burst Pressure: 696Psi (48 Bar)

Code No.	Size	Colour
HRS041-30-25-BK	1" (25mm) x 30m	Black
HRS041-30-25-RD	1" (25mm) x 30m	Red
HRS041-30-20-BK	3/4" (19mm) x 30m	Black
HRS041-30-20-RD	3/4" (19mm) x 30m	Red



## NOZZLE

**SRI** hose reel nozzles are designed, tested and approved to meet European Standard EN671-1 and Australian Standard AS 1221.

Nylon and ABS material complies to ageing test in accordance to ISO4892-2.2.  
Throw range position at 0.6M 30° ± inclination, in accordance to EN671-1 Clause 10.4  
Flowrate meets the equivalent nozzle diameter of 6mm in accordance to EN671-1.

Code No.	Setting	Material	Finishing	Inlet Size	Flowrate @ 30Psi (2.0 Bar)	Throwrange @ 30Psi
HRS065-GM-020-RD	Jet / Spray	Nylon/Brass	Red	3/4" ( 19 mm )	27L/MIN (JET)	11.5M
HRS065-GM-025-RD	Jet / Spray	Nylon/Brass	Red	1" ( 25 mm )	35L/MIN (JET)	11.5M
HRS057-PS-020-RD	Jet / Spray	Nylon	Red	3/4" ( 19 mm )	27L/MIN (JET)	11.0M
HRS057-PS-025-RD	Jet / Spray	Nylon	Red	1" ( 25 mm )	35L/MIN (JET)	11.0M
HRS032-PS-020-RD	Jet / Spray	ABS/Brass	Red	3/4" ( 19 mm )	27L/MIN (JET)	11.0M
HRS032-PS-025-RD	Jet / Spray	ABS/Brass	Red	1" ( 25 mm )	35L/MIN (JET)	11.0M
HRS032-PS-020-CH	Jet / Spray	ABS/Brass	Chrome	3/4" ( 19 mm )	27L/MIN (JET)	11.0M
HRS032-PS-025-CH	Jet / Spray	ABS/Brass	Chrome	1" ( 25 mm )	35L/MIN (JET)	11.0M
HRS039-GM-020-NA	Jet / Spray	Brass	Natural	3/4" ( 19 mm )	27L/MIN (JET)	11.0M
HRS039-GM-025-NA	Jet / Spray	Brass	Natural	1" ( 25 mm )	35L/MIN (JET)	11.0M
HRS039-GM-020-CH	Jet / Spray	Brass	Chrome	3/4" ( 19 mm )	27L/MIN (JET)	11.0M
HRS039-GM-025-CH	Jet / Spray	Brass	Chrome	1" ( 25 mm )	32L/MIN (JET)	11.0M
HRS050-GM-020-CH	Jet	Brass	Chrome	3/4" ( 19 mm )	27L/MIN	11.0M
HRS050-GM-025-CH	Jet	Brass	Chrome	1" ( 25 mm )	32L/MIN	11.0M



HRS032-PS-020-CH  
HRS032-PS-025-CH



HRS032-PS-020-RD  
HRS032-PS-025-RD



HRS057-PS-020-RD  
HRS057-PS-025-RD



HRS050-GM-020-CH  
HRS050-GM-025-CH



HRS039-GM-020-NA  
HRS039-GM-025-NA



HRS065-GM-020-RD  
HRS065-GM-025-RD